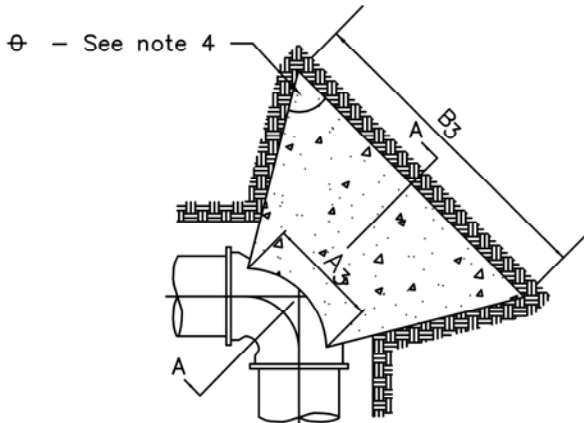


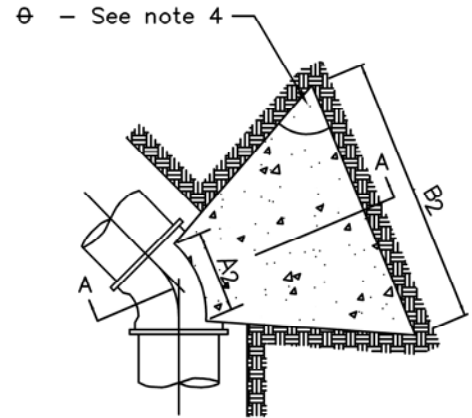
NOTES:

1. Shape of back of buttress may vary as long as poured against firm undisturbed earth.
2. Dimension C1,C2,C3 should be large enough to make angle θ equal to or larger than 45°.
3. Dimension A1,A2,A3 should be as large as possible without interfering with MJ bolts.
4. $\theta = 45^\circ$ Minimum.
5. Place polyethylene between concrete & pipe.
6. All bends & fittings shall be restrained with Megalugs thrust restraints or equal

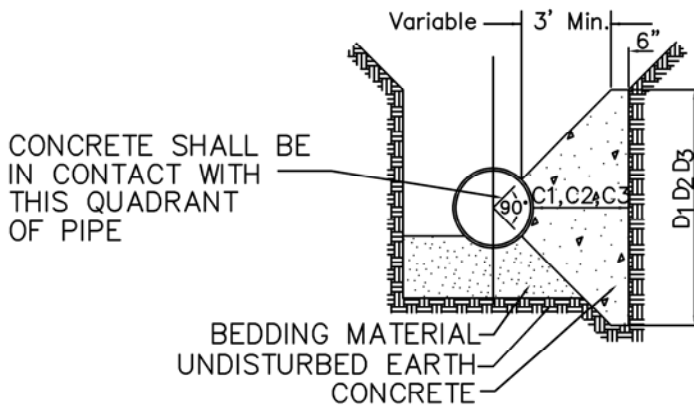
BUTTRESS DIMENSIONS						
PIPE SIZE	22 1/2° BEND		45° BEND		90° BEND/TEE	
	B ₁	D ₁	B ₂	D ₂	B ₃	D ₃
6"	1'-5"	1'-5"	1'-5"	1'-5"	2'-1"	1'-6"
8"	1'-5"	1'-5"	2'-1"	1'-6"	2'-8"	2'-0"
12"	1'-10"	1'-10"	3'-4"	2'-0"	4'-9"	2'-6"
16"	3'-0"	2'-0"	3'-10"	3'-0"	6'-2"	3'-6"
20"	3'-6"	2'-8"	5'-6"	3'-4"	8'-4"	4'-0"
24"	4'-4"	3'-0"	6'-10"	3'-10"	9'-8"	5'-0"
30"	-	-	9'-3"	6'-0"	17'-0"	6'-0"



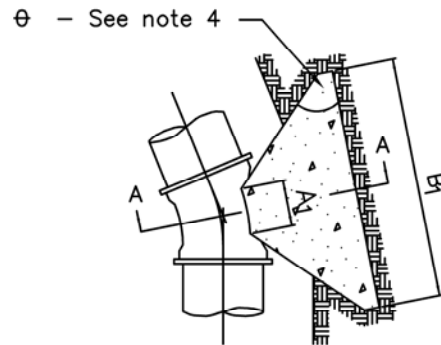
PLAN 90° BENDS



PLAN 45° BENDS



SECTION A-A



PLAN 22 1/2° BENDS



**CITY OF
CHANHASSEN**

CONCRETE
THRUST
BLOCKING

REVISED: 2-08

FILE NAME: G:\ENG\SPECS\1002

ENGINEERING DEPARTMENT

PLATE NO.:

1002