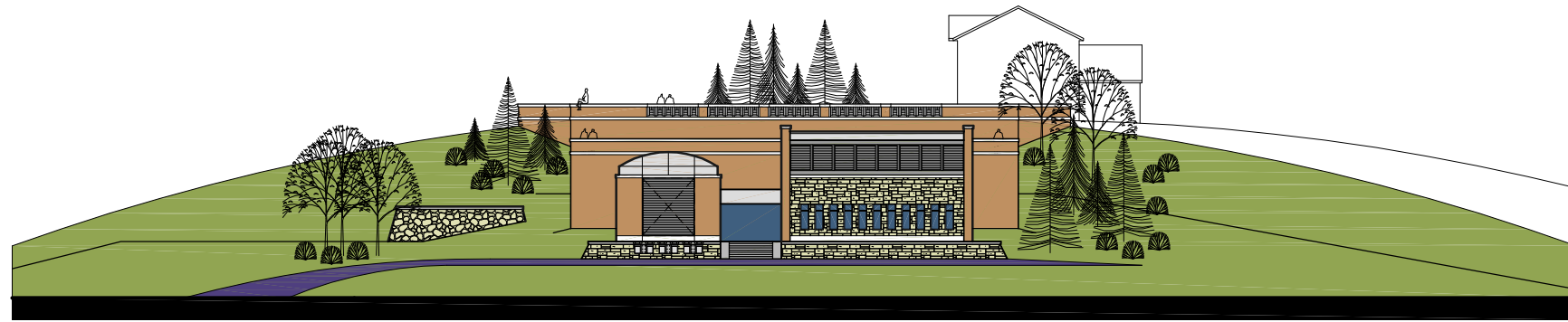
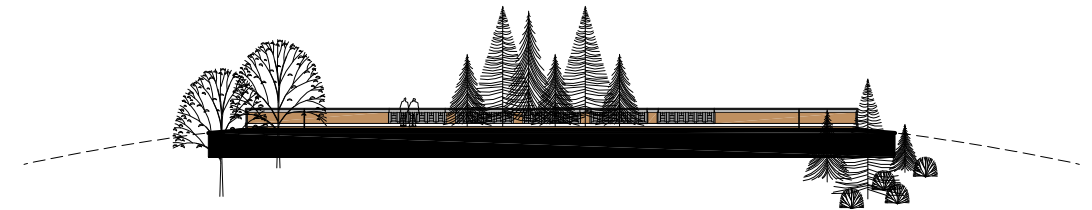


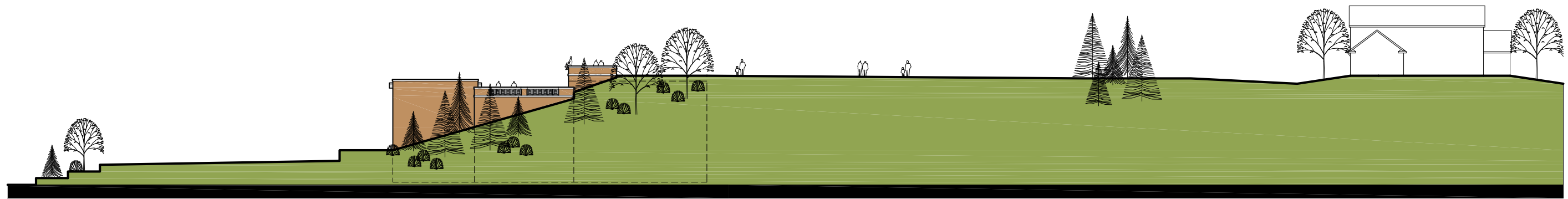
Side Elevation | view from northeast



Front Elevation | view from southeast



Back Elevation | view from northwest



Side Elevation | view from southwest

# West Water Treatment Plant for the City of Chanhassen

3535 MADISON CENTER DR  
 FARMERSBURGH, MN 55026  
 PHONE: 651-490-2100  
 FAX: 651-490-2150  
 TATS: 800-325-2055  
 www.sehinc.com



I HEREBY CERTIFY THAT THIS PLAN, SPECIFICATION, SUPPLEMENT, AND AMENDMENT WAS PREPARED BY ME OR UNDER MY CLOSE PERSONAL SUPERVISION AND THAT I AM A DULY LICENSED PROFESSIONAL ENGINEER UNDER THE LAWS OF THE STATE OF MINNESOTA.  
 DATE: XX/XX/XX LICENSE NO. \_\_\_\_\_

WEST WATER  
 TREATMENT PLANT  
 FOR THE CITY OF  
 CHANHASSEN, MINNESOTA

PRELIMINARY  
 DRAWING

MARK	DATE	DESCRIPTION	REVISIONS

SEH FILE NO. A-CHANH0503.00  
 CITY BID NO. \_\_\_\_\_  
 ISSUE DATE APRIL 2005  
 DESIGNED BY \_\_\_\_\_  
 DRAWN BY \_\_\_\_\_  
 Short, Elliott, Hendrickson, Inc. @ (SEH)  
 © 2005 Short, Elliott, Hendrickson, Inc.

SHEET TITLE

SHEET  
 A1