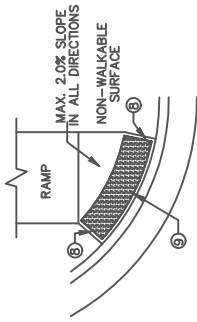
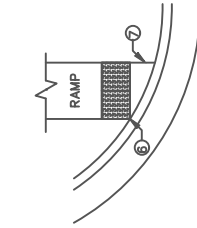


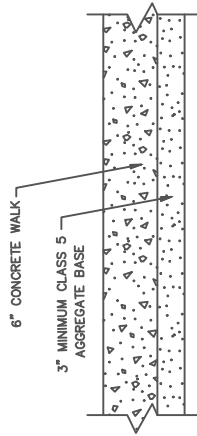
TYPICAL SIDE TREATMENT OPTIONS ⑤



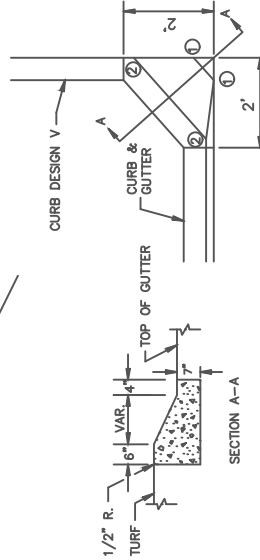
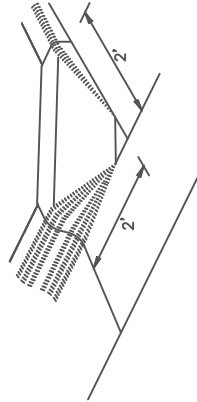
DETECTABLE WARNING SETBACK CRITERIA



RADIAL DETECTABLE WARNING AT RADIUS



TYPICAL SIDEWALK SECTION WITHIN INTERSECTION CORNER



APPROACH NOSE DETAIL FOR DOWNSTREAM SIDE OF TRAFFIC

- NOTES:
 SEE STANDARD PLATE 7038 AND THIS SHEET FOR DETAILS ON DETECTABLE WARNING.
 USE 6" CONCRETE WALK UP TO EXISTING SIDEWALK GRADES FOR ALL RAMP AND LANDING AREAS.
 WHETHER A SURFACE IS WALKABLE OR NOT SHALL BE DETERMINED BY THE ENGINEER.
 FLARE LENGTHS SHOULD BE LESS THAN 8' LONG MEASURED ALONG THE RAMP FROM THE BACK OF CURB.
 4. MINIMUM WIDTH OF DETECTABLE WARNING IS REQUIRED FOR ALL RAMP; REDUCE PATH WIDTH TO HAVE DETECTABLE WARNING ACROSS THE ENTIRE WIDTH OF PATH WHEN THE PATH CROSSES A ROAD.
 ① 0" CURB HEIGHT.
 ② FULL CURB HEIGHT.
 ③ 2' - 3' CONCRETE FLARE.
 ④ IMMOVABLE OBJECT OR OBSTRUCTION.
 ⑤ SIDE TREATMENTS ARE APPLICABLE TO ALL RAMP TYPES AND SHOULD BE ENGINEERED AS NEEDED ON ALL RAMP AS FIELD CONDITIONS DICTATE. THE ENGINEER SHALL DETERMINE THE RAMP SIDE TREATMENTS BASED ON MAINTENANCE OF BOTH ROADWAY AND SIDEWALK, ADJACENT PROPERTY CONSIDERATIONS, AND MITIGATING CONSTRUCTION IMPACTS.
 ⑥ DETECTABLE WARNING SHALL HAVE ONE CORNER 3" FROM THE BACK OF CURB.
 ⑦ SHALL BE 2' MAXIMUM OFFSET WHEN ADJACENT TO WALKABLE SURFACE AND 5' MAXIMUM OFFSET WHEN ADJACENT TO NON-WALKABLE SURFACE.
 ⑧ WHEN NO FLARES ARE PROPOSED, THE CONCRETE WALK SHALL BE FORMED AND CONSTRUCTED PERPENDICULAR TO THE BACK OF CURB. MAINTAIN 3" BETWEEN EDGE OF DOMES AND EDGE OF CONCRETE.
 ⑨ DETECTABLE WARNING TO BE PLACED AT A UNIFORM OFFSET DISTANCE FROM 3" TO 6" FROM THE BACK OF CURB. IF NO CURB AND GUTTER IS PLACED IN RURAL SECTIONS, DETECTABLE WARNING SHALL BE PLACED 1' FROM THE EDGE OF ROADWAY TO PROVIDE CONCRETE BORDER.



CITY OF CHANHASSEN

Pedestrian Curb Ramps

Page 4 of 5

MnDOT STANDARD PLAN
 SHEET NO. 5-297.250
 (4 OF 5)

REVISED: 10-16

FILE NAME: G:\ENG\SPCS\5215C

ENGINEERING DEPARTMENT

PLATE NO.:

5215C