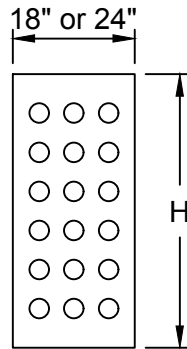
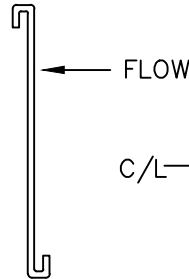


d (IN.)	H (IN.)	$\Theta$ (DEG.)		y (IN.)	Ys	D
		MIN.	MAX.			
12	34	130	230	12	MIN. 4 FT.	VARIES
15	34	130	230	12		
18	34	130	230	12		
21	44	140	220	12		
24	44	140	220	12		
27	44	140	220	12		
30	54	150	210	12		
36	54	150	210	12		

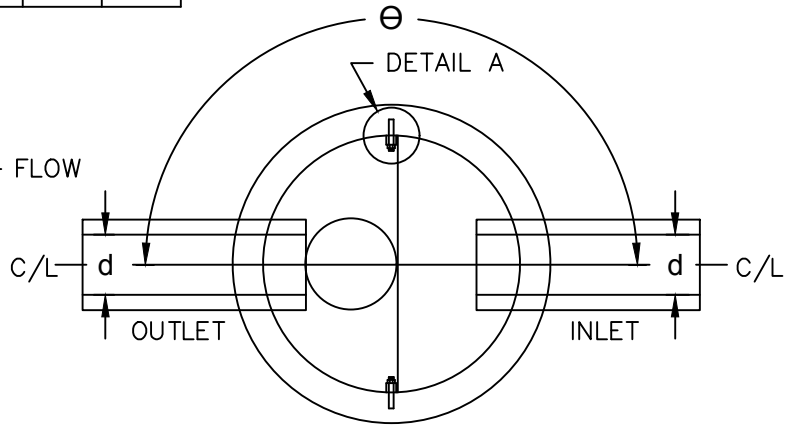


FRONT

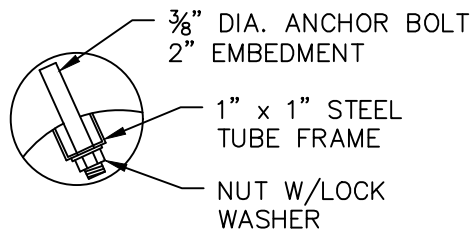
BAFFLE PANEL



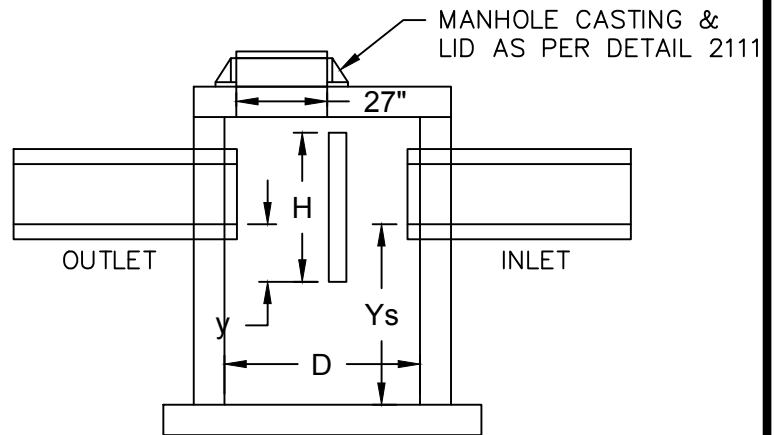
SIDE



TOP VIEW OF SUMP



DETAIL A



SIDE VIEW OF SUMP

This generic detail does not encompass the sizing, fit, and applicability of the Baffle for this specific project. It is the ultimate responsibility of the design engineer to assure that the design is in compliance with all applicable laws and regulations.



**CITY OF  
CHANHASSEN**

**BAFFLE STRUCTURE**

STANDARD SUMP MANHOLE W/BAFFLE

REVISED: 3-16

FILE NAME: G:\ENG\SPECS\3110

ENGINEERING DEPARTMENT

PLATE NO.:

3110