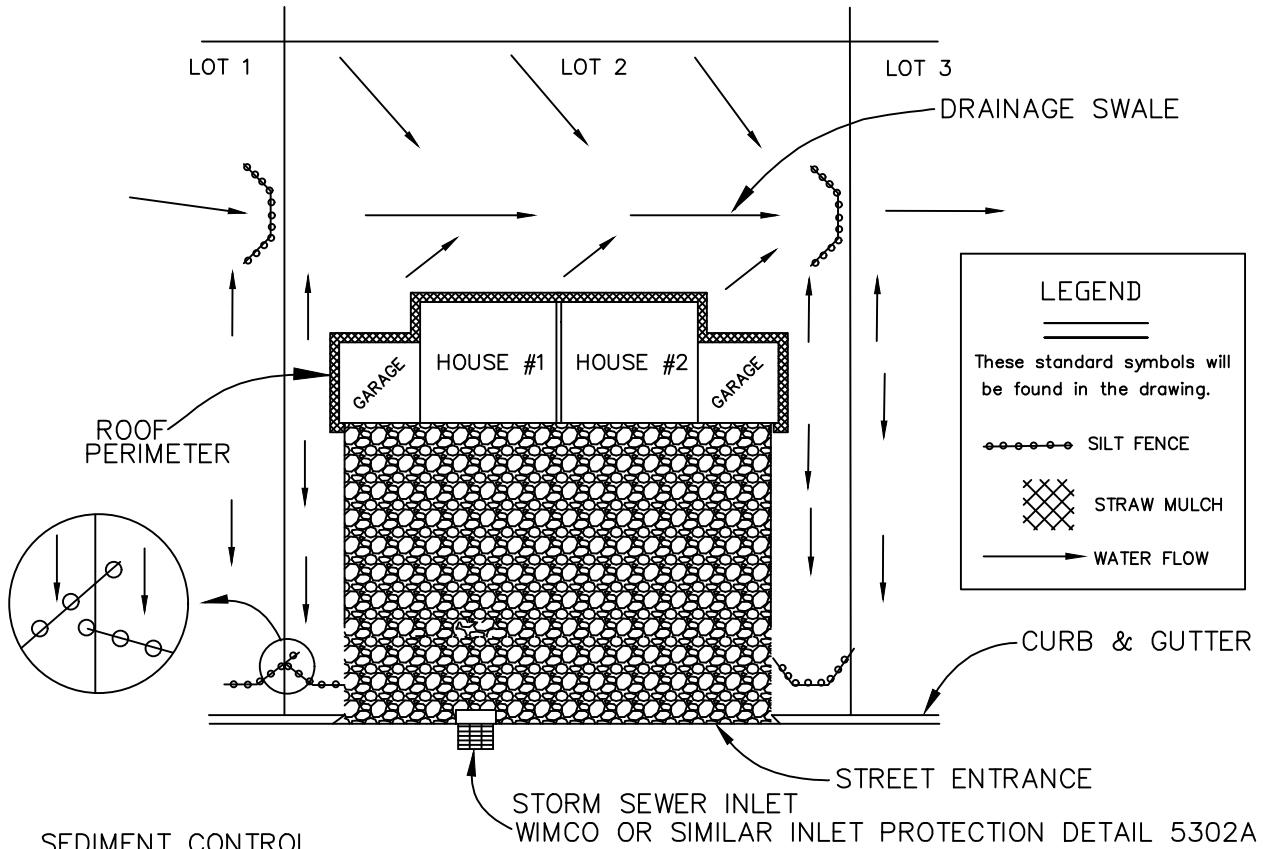


EROSION CONTROL PLAN FOR MULTIFAMILY LOTS WITH SWALE DRAINAGE



SEDIMENT CONTROL

- * Water resources staff must be contacted before any/all dewatering activity
- * Perimeter sediment controls are necessary at downsloping property and street edges. Note that sediment controls need to provide containment by turning perimeter controls upslope—into property.
- * Perimeter controls can include filter logs, mulch berms and/or silt fence.
- * See MNDot Spec. 3897 & 2573.
- * Temporary stockpiles cannot be placed in drainage swales, surface waters, or on public streets, and must have perimeter control.

EROSION CONTROL

- * Topsoil—Site has a minimum of 4–6 inches of topsoil.
- * Construction entrance—1 to 2" clean crushed rock at a depth of 6 inches.
- * House Roof Perimeter—Straw mulch at 2 inches deep around house directly below roof line. If house has rain gutters, downpouts need energy dissipation.
- * Slopes—Steeper than 4:1 with positive grade to the waters of the state need erosion control blankets and temporary or permanent seeding.
- * Swales—Need blankets over the final 200'.
- * Swales—Need check dams if slope is 4:1 or greater.
- * See MNDot Spec. 3885 & 2575.



**CITY OF
CHANHASSEN**

EROSION CONTROL PLAN FOR
MULTIFAMILY LOTS
WITH SWALE DRAINAGE

REVISED: 2-13

FILE NAME: G:\ENG\SPCS\5302E

ENGINEERING DEPARTMENT

PLATE NO.:

5302E