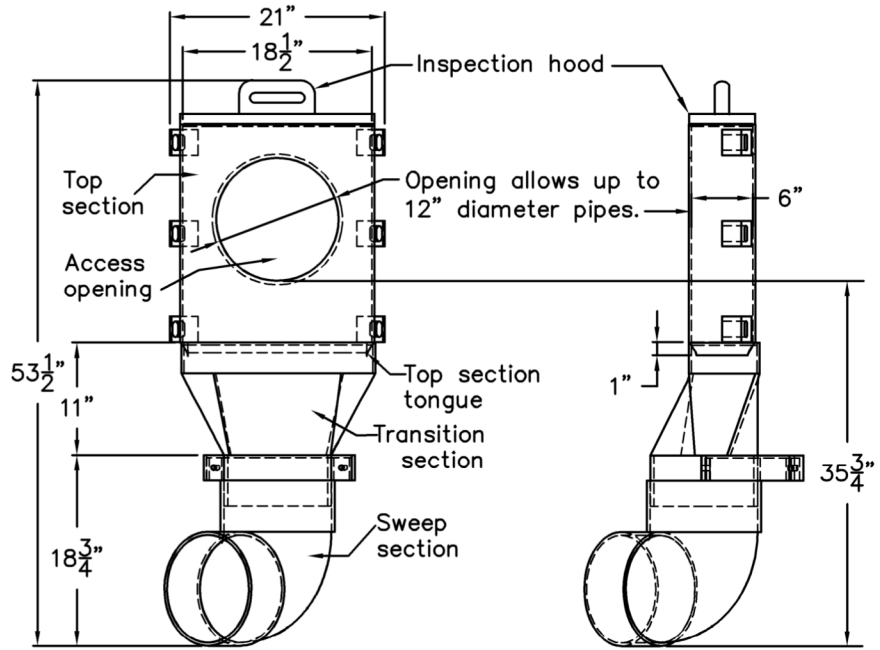
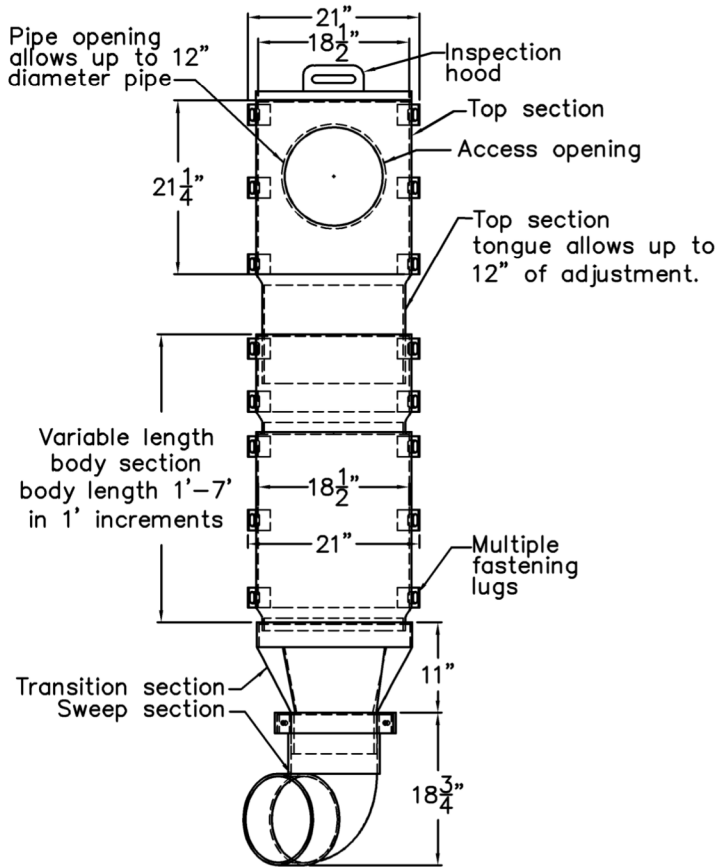


1. To achieve the shortest drop height of $35\frac{3}{4}$ ", the incoming pipe must rest on the invert of the 12" access opening.
2. Trim top section tongue to its minimum length of 1".
3. If "Forterra IntraFlow Low-Profile Inside Drop System" or approved equal cannot be installed due to minimum drop section constraints then refer to detail plate 2104B.



Minimum drop section



Standard drop section

NOTES:

1. Pipe shall be cut flush with the inside face of the MH wall.
2. All dog houses shall be grouted on the inside.
3. Precast inverts shall be 1/2 the diameter of the pipe and benches sloped inwards 2" towards the pipe invert.



**CITY OF
CHANHASSEN**

SANITARY SEWER INSIDE
DROP SECTIONS

REVISED: 1-21

FILE NAME: G:\ENG\SECS\2104

ENGINEERING DEPARTMENT

PLATE NO.:

2104A